



Company presentation:

Ed. 3/.01



BLOWER-DOOR-TEST

tenuta all'aria degli edifici | termografia industriale e civile

We have over 10-years in the non-destructive test business and have a stream of trained, certified and experienced technicians. **Blower-door-test**® provides cost-effective infrared inspection services for Reliability and Risk Management. We use the latest technology available to provide the best quality test and to provide our customers with extensive, user-friendly analysis reports.

We performed blower-door-tests for the most important projects in Italy, including all the towers of *Porta Nuova* in Milan, LEED® certified, and Amazon logistic hub in Rieti and Vercelli, both BREEAM® certified. We have international clients as *Roche*, *Marriott* and *Techint*.

Our technicians support the project team from the preliminary phase to achieve the goals required by the main environmental certification protocols.





BLOWER-DOOR-TEST

tenuta all'aria degli edifici | termografia industriale e civile

Our references:



Sustainability assessment method





Completed PROJECTS :

- Hines - Porta Nuova Varesine _ Milan
- Colombo Costruzioni - Bosco verticale _ Milan
- Amazon – Techbau - Logistic hub _ Vercelli
- Amazon - Engeenering 2K - Logistic hub _ Rieti
- Roche S.p.A. _ Segrate (Milan)
- Tenova S.p.A. - Techint _ Varese
- Marriot - Hotel Moxy _ Malpensa Airport
- Università degli Studi di Milano _ Milan

Ongoing PROJECTS :

- Amazon - Engeenering 2K - Logistic hub _ Torrazza
- Amazon - Engeenering 2K - Logistic hub _ Casirate

Hines



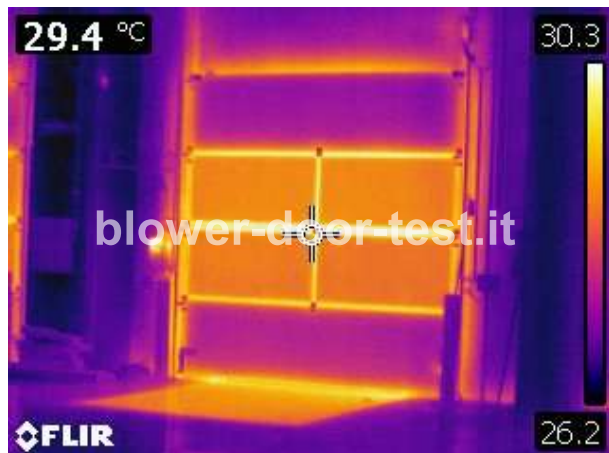
BLOWER-DOOR-TEST.it®
tenuta all'aria degli edifici | termografia industriale e civile

Porta Nuova Varesine, Milan



















Marriott
HOTELS · RESORTS · SUITES



UNIVERSITÀ
DEGLI STUDI
DI MILANO



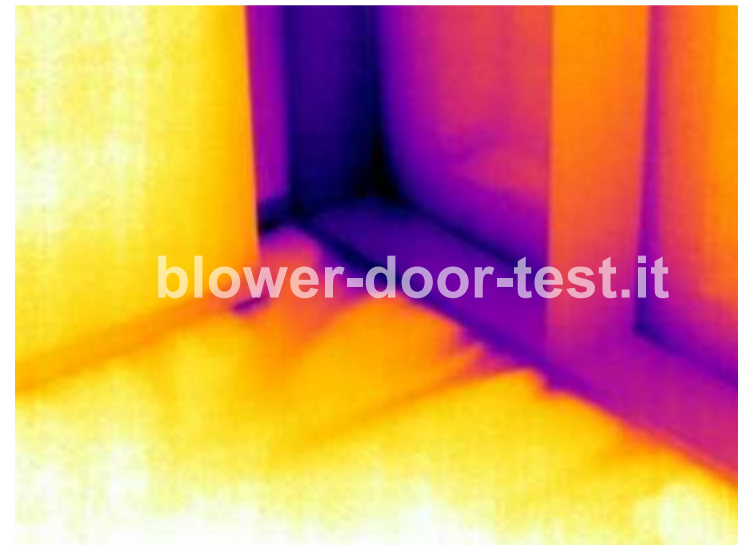
OUR SERVICES :

- Large building blower-door-test
- Blower-door-test
- Leakage inspections
- Infrared leakage inspections
- Envelope inspections
- Thermal bridges inspections
- Industrial thermography

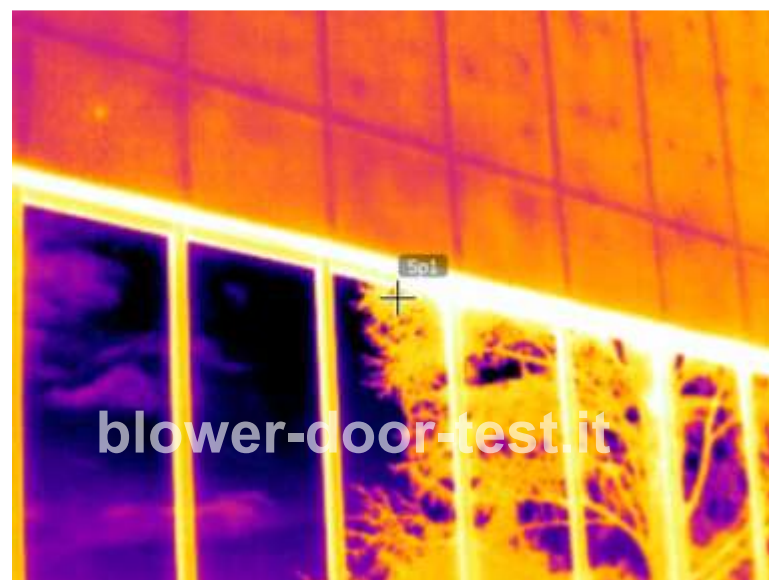
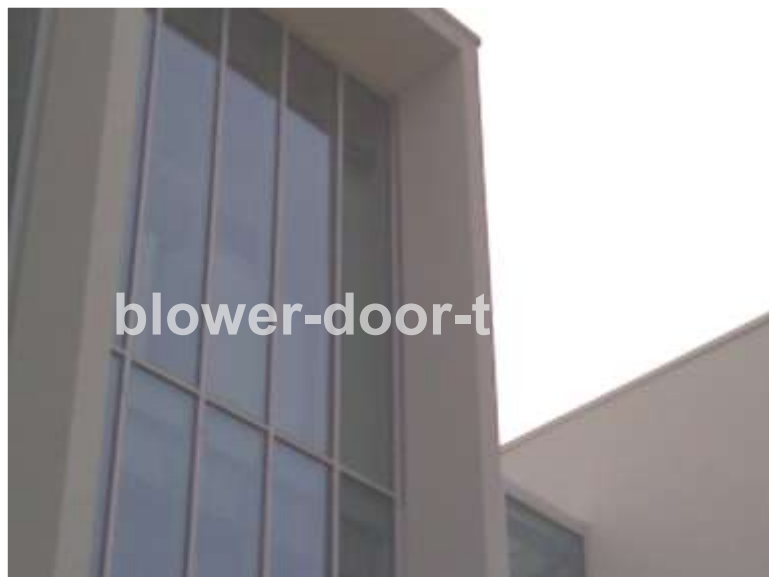






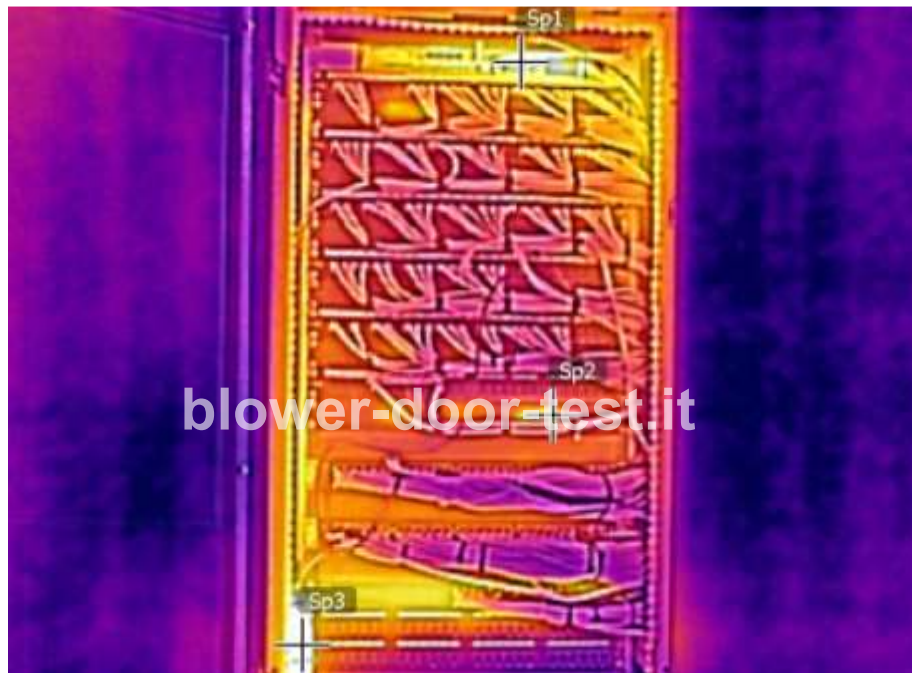
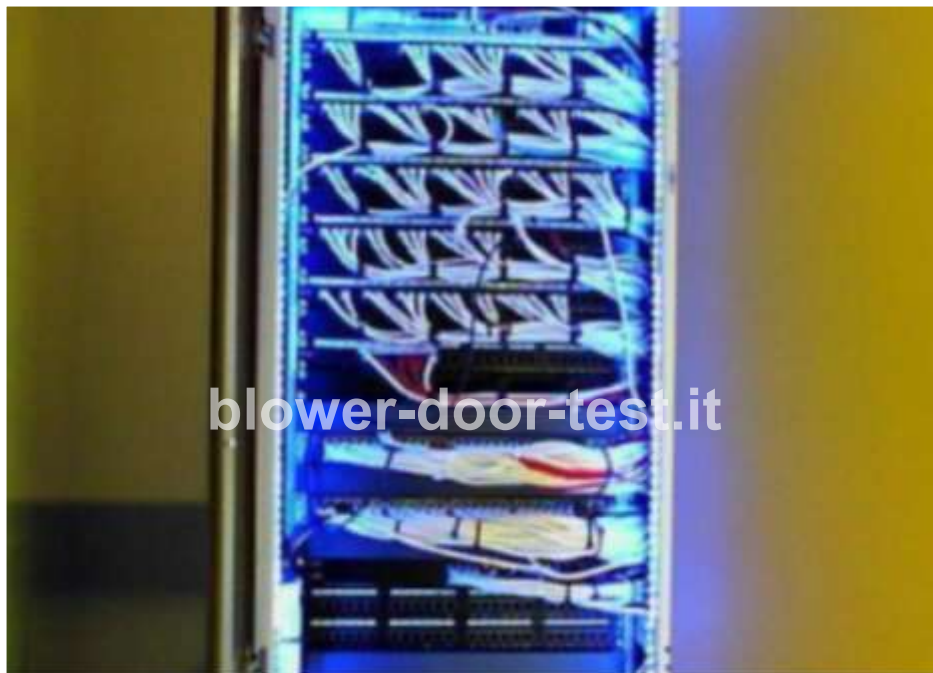


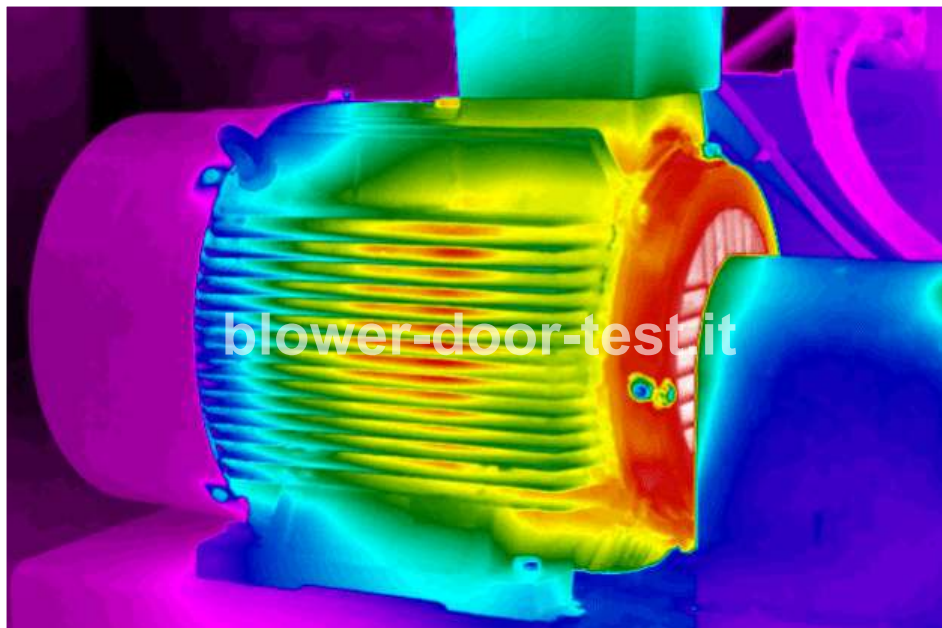




A thermal image of an industrial facility, showing a complex network of pipes and structural elements. The color scale ranges from dark blue (cooler) to bright yellow (warmer). A prominent horizontal pipe in the upper right is very bright yellow, indicating high temperature. Other pipes and structural supports are in various shades of blue and purple, indicating lower temperatures. The background shows more industrial structures and a bright light source on the right.

blower-door-test.it





BLOWER-DOOR-TEST ©

Via San gottardo 7, 20900 Monza

www.blower-door-test.it

Business enquiries: info@blower-door-test.it ; Tel. +39 366 7571540

